

Seven investment profiles

disciplined approach and competitive pricing

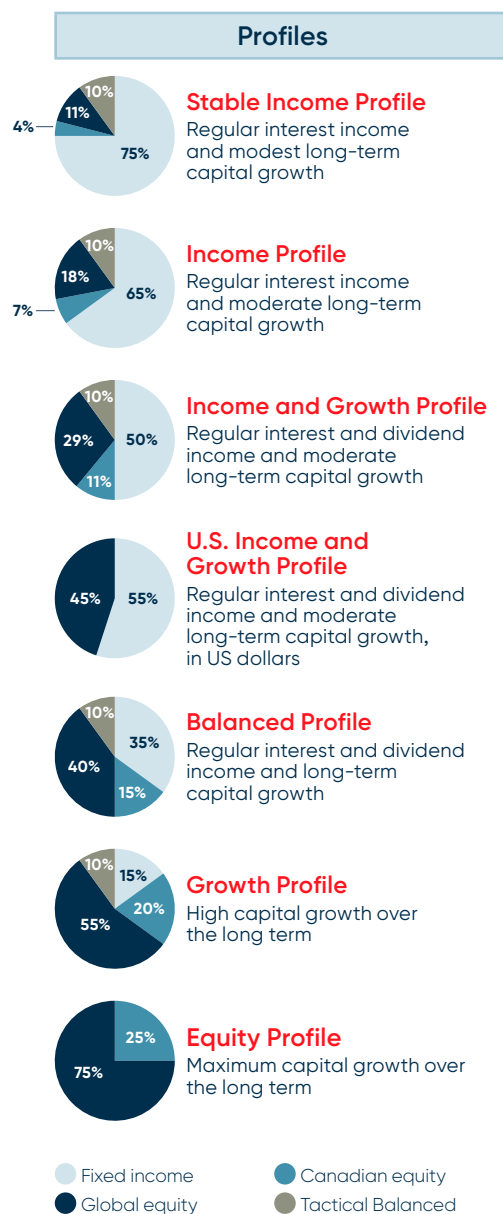


Seven model investment profiles designed to meet the needs of wealthy clients, including a US\$ profile

A wide variety of asset classes and complementary management styles

Access to investment strategies that often are only available to institutional investors

A competitive service fee formula, with service fees calculated on a declining scale based on the size of the assets held in the account



Underlying Funds
Fixed income
NBI Canadian Bond Private Portfolio
NBI U.S. Bond Private Portfolio
NBI Corporate Bond Private Portfolio
NBI Non-Traditional Fixed Income Private Portfolio
NBI High Yield Bond Private Portfolio
NBI Canadian Preferred Equity Private Portfolio
Canadian equity
NBI Canadian Equity Private Portfolio
NBI Canadian High Conviction Equity Private Portfolio
NBI Canadian Small Cap Equity Private Portfolio
Global equity
NBI U.S. Equity Private Portfolio
NBI U.S. High Conviction Equity Private Portfolio
NBI International Equity Private Portfolio
NBI International High Conviction Equity Private Portfolio
NBI Non-Traditional Capital Appreciation Private Portfolio
NBI Diversified Emerging Markets Equity Fund
NBI Real Assets Private Portfolio
NBI Tactical Equity Private Portfolio
Diversified funds
NBI Tactical Asset Allocation Fund

Target asset allocation allows for adjustments to reflect market conditions.

NBI Private Wealth Management is offered by National Bank Investments Inc., a subsidiary of National Bank of Canada. Commissions, trailing commissions, management fees and expenses all may be associated with mutual fund investment and the use of an asset allocation service (such as NBI Private Wealth Management). Please read the prospectus of the NBI Private Portfolios composing the NBI Private Wealth Management profiles before investing. The funds are not guaranteed, their values change frequently and past performance may not be repeated. There can be no assurances that the full amount of the investment in a fund will be returned. Investors must enter into an agreement with National Bank Investments Inc., which retains the services of National Bank Trust Inc. (for all activity in Quebec, Prince Edward Island, Saskatchewan and New Brunswick) or Natcan Trust Company (for all activity in all other Canadian provinces and territories), subsidiaries of National Bank of Canada acting as portfolio managers, which gives them the authority to select, add or remove NBI Private Portfolios composing the NBI Private Wealth Management profiles.



Open architecture.
Endless opportunities.